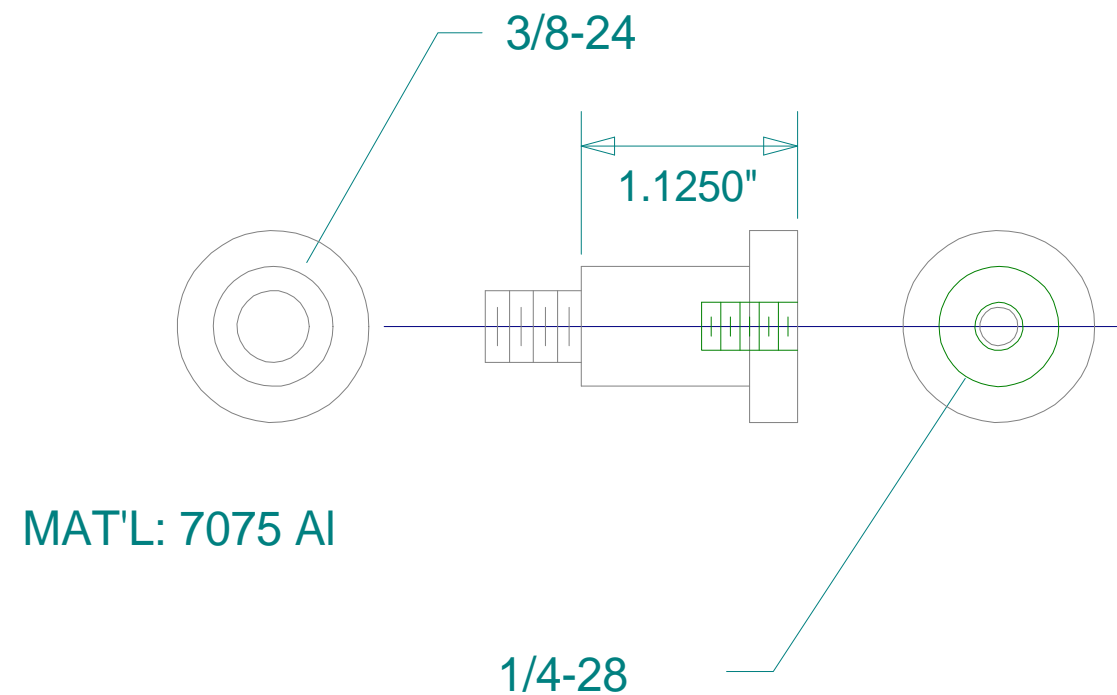


- 1) Drill & tap outboard end of the axle 3/8-24 on axis
- 2) Attach the fork piece to the inboard aft 2 axle bolts
- 3) Bend, twist, form the three tabs as required to mate with the fixed side of the wheel pant
- 4) Mount 10-32 nut plates to each of the three tab ends
- 5) Transfer the hole locations to the fixed side of the wheel pant
- 6) Machine the axle extension to the correct length to match the removable side of the wheel pant



WHEEL PANTS MOUNTING HARDWARE FOR FEATHER LITE 5" WHEEL PANTS