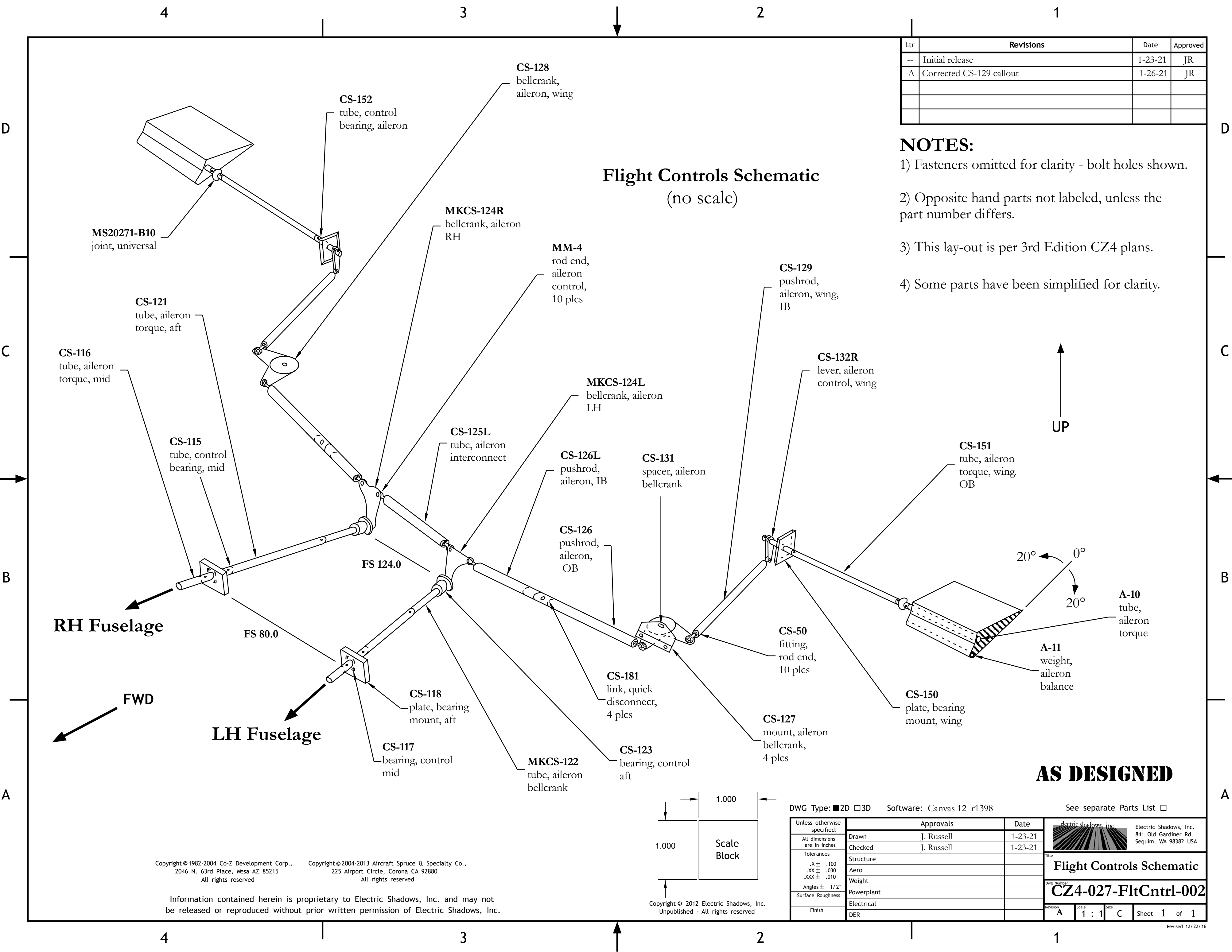


Ltr	Revisions	Date	Approved
--	Initial release	1-23-21	JR
A	Corrected CS-129 callout	1-26-21	JR

NOTES:

- 1) Fasteners omitted for clarity - bolt holes shown.
- 2) Opposite hand parts not labeled, unless the part number differs.
- 3) This lay-out is per 3rd Edition CZ4 plans.
- 4) Some parts have been simplified for clarity.

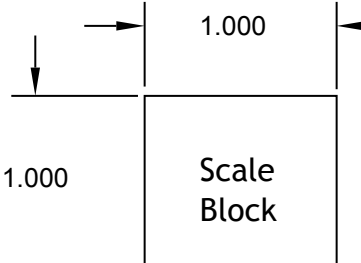
Flight Controls Schematic
(no scale)




↑
UP

20° 0° 20°

AS DESIGNED



DWG Type: <input checked="" type="checkbox"/> 2D <input type="checkbox"/> 3D		Software: Canvas 12 r1398	See separate Parts List <input type="checkbox"/>	
<small>Unless otherwise specified:</small> <small>All dimensions are in inches</small> Tolerances .X ± .100 .XX ± .030 .XXX ± .010 Angles ± 1/2° Surface Roughness Finish	Approvals	Date	 Electric Shadows, Inc. 841 Old Gardiner Rd. Sequim, WA 98382 USA	
	Drawn	J. Russell		1-23-21
	Checked	J. Russell		1-23-21
	Structure			
	Aero			
	Weight			
	Powerplant			
	Electrical			
	DER			

Copyright © 1982-2004 Co-Z Development Corp.,
2046 N. 63rd Place, Mesa AZ 85215
All rights reserved

Copyright © 2004-2013 Aircraft Spruce & Specialty Co.,
225 Airport Circle, Corona CA 92880
All rights reserved

Information contained herein is proprietary to Electric Shadows, Inc. and may not be released or reproduced without prior written permission of Electric Shadows, Inc.

Copyright © 2012 Electric Shadows, Inc.
Unpublished - All rights reserved

Flight Controls Schematic			
Dwg Number: CZ4-027-FltCntrl-002			
Revision	Scale	Size	Sheet
A	1 : 1	C	1 of 1